



"The Marine Corps at a Glance"



UNCLASSIFIED












Agenda

- 🦖 Enduring Principles and Brief History
- 🦖 Organization
- 🦖 Marine Air Ground Task Force



United States Marine Corps

Enduring Principles

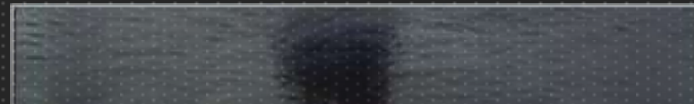
-  Marines are focused on combat; every Marine is a rifleman.
-  Marines are ready, relevant, and forward deployed.
-  Marines are innovative, adaptable, and versatile; Marines win.
-  Marines do what is right for the Nation.
-  Marines keep their honor clean.
-  Marines take care of their own.
-  The Marine Corps is a naval expeditionary force.
-  The Marine Corps is an integrated combined arms organization of complementary air, ground, and logistics components.
-  The Marine Corps is a good steward of the Nation's resources.











HISTORY OF THE CORPS

- Established 10 November 1775
- Naval Service (1775-1900)
 - Ships detachments, navy yard barracks, provisional forces for expeditionary service ashore
- Small Wars (1900-1940 and presently)
 - Irregular warfare and counter-insurgency
 - State Department troops
- Conventional Wars (1916 – 1991)
 - WWI, WWII, Korea, Desert Storm
- Hybrid Wars (1965, 2001, 2003, and presently)
 - Vietnam, Afghanistan, Iraq
- America's 911 Force (1986 – present)
 - Amphibious, expeditionary, air-ground-logistics task force





THE MARINE CORPS LANE

-  **High state of readiness**
-  **Inherently expeditionary**
-  **Scalable & task organized**
-  **Amphibious**
-  **Any clime and place**
-  **Joint partner & enabler**



"...at the front door of crisis and conflict, we possess the finesse, the training and the tools to knock at the door diplomatically, pick the lock skillfully, or kick it in violently."

35th CMC Planning Guidance 2010

UNCLASSIFIED



MARINE CORPS ORGANIZATION

Headquarters, U.S. Marine Corps (HQMC)

- Recruiting, Educating, Training, Equipping

Supporting Establishment

- Bases and Stations

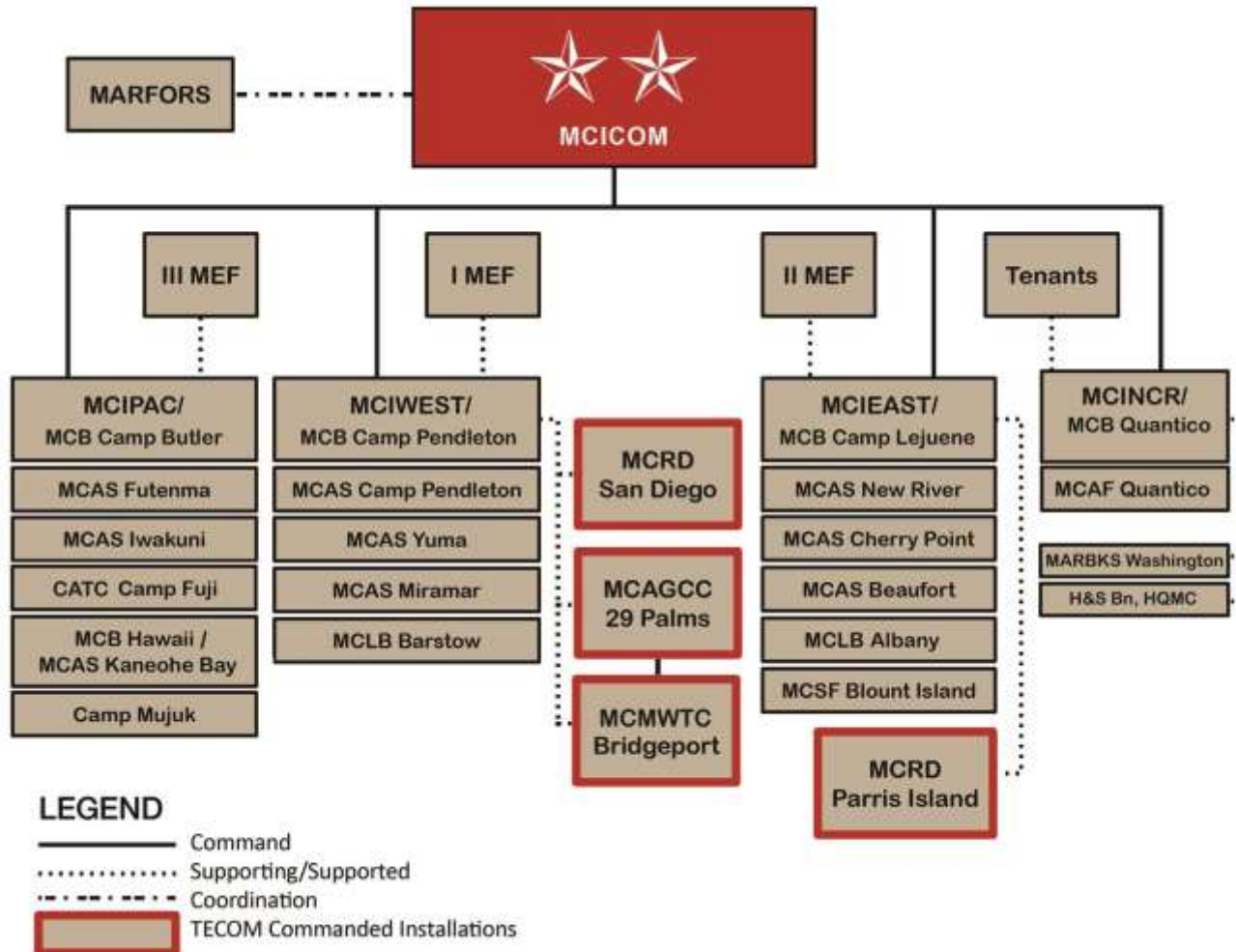
Operating Forces

- Service Component Commands
- Marine Air Ground Task Forces (MAGTFs)
- Marine Corps Forces Reserve
- Chem/Bio Incident Response Force (CBIRF)
- Marine Corps Security Force Regiment
- Marine Corps Embassy Security Group
- Marine Forces Cyber Command
- Marine Special Operations Command
- HMX-1 Presidential Support Squadron





MARINE CORPS INSTALLATIONS





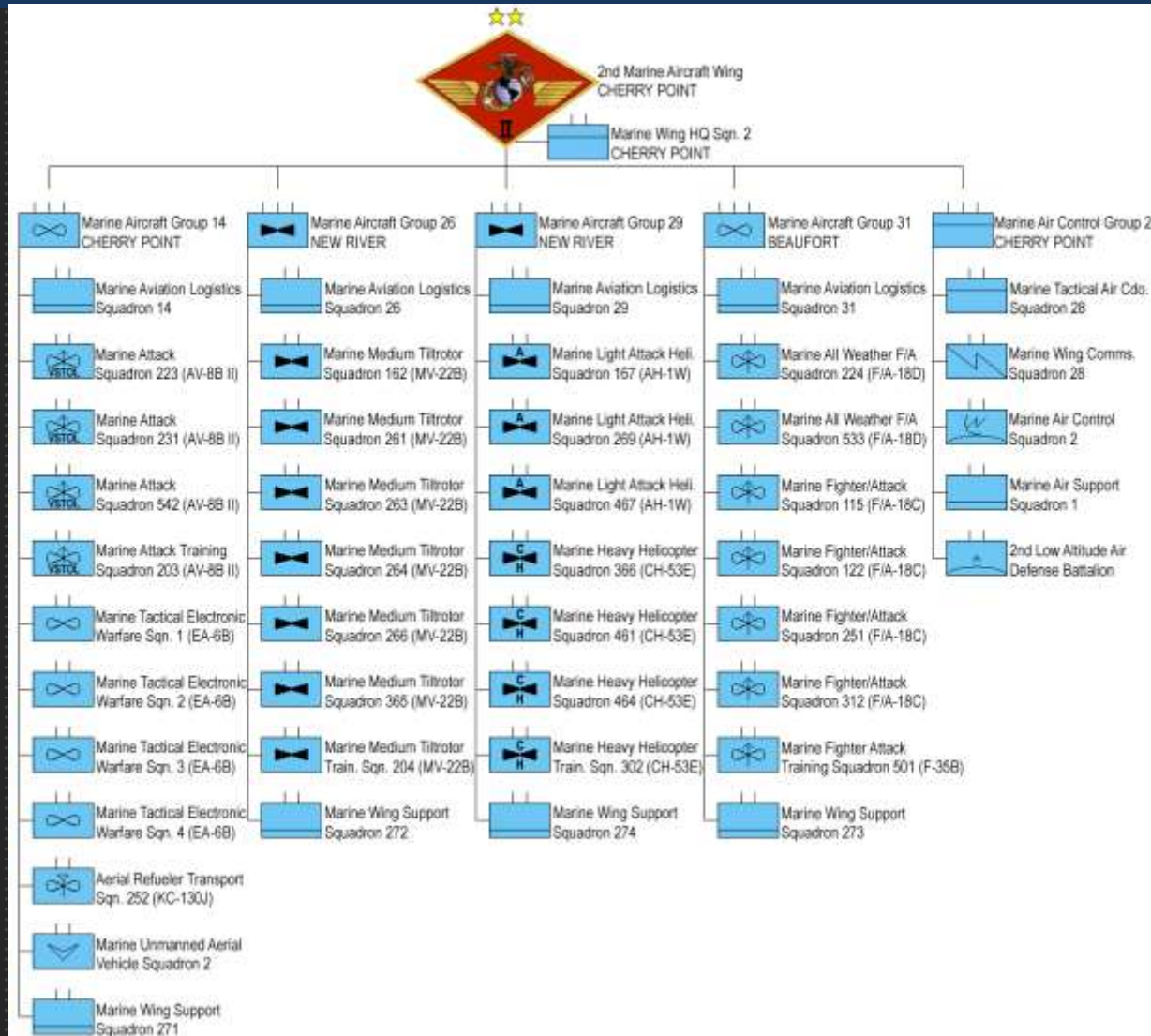
MARINE DIVISION



Division	Regiment	Battalion
~1,050 MO ~15,000 ME	~175 MO ~3,000 ME	~50 MO ~900 ME



MARINE AIR WING (MAW)



Marine Air Wing (MAW)

~1,800 MO

~14,500 ME

Marine Air Group (MAG)

~450 MO

~3,300 ME

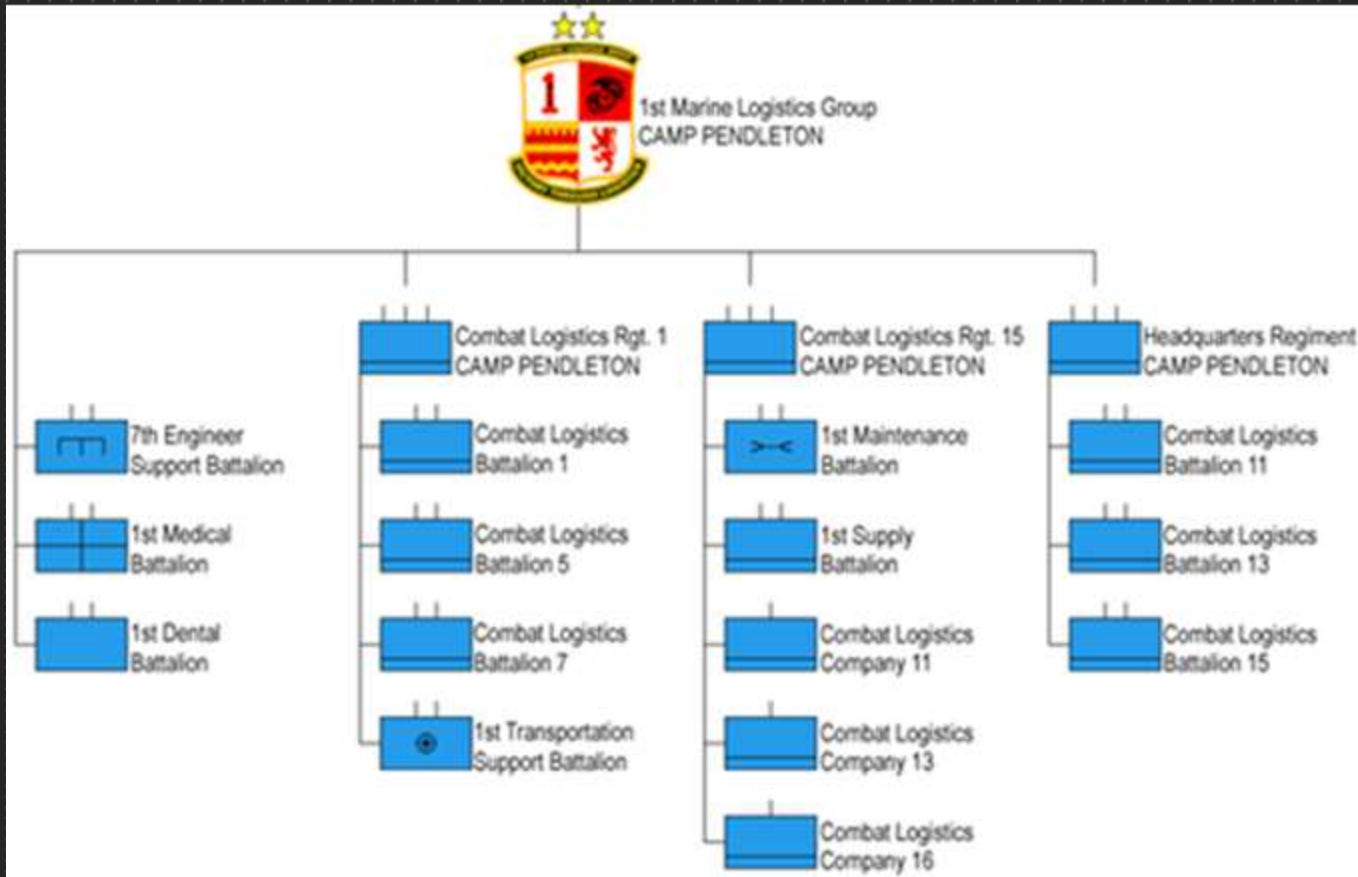
Squadron

~21-70 MO

~200-400 ME



MARINE LOGISTICS GROUP (MLG)



Marine Logistics Group (MLG)
~475 MO
~6,150 ME

Combat Logistics Regiment (CLR)
~125 MO
~1,500 ME

Combat Logistics Battalion (CLB)
~20 MO
~250 ME



RESERVES ORGANIZATION

- Reserve units will roughly mirror Active Duty units, with the exception of being spread over a larger area
- **Inspector-Instructor (I-I)**
 - Active duty support personnel who instruct and assist reserve units to maintain a continuous state of readiness for mobilization
 - Smaller organization, ranging from 15-250 Marines, dispersed among the Reserves units





MARINE AIR-GROUND TASK FORCE

Command Element

Ground Combat Element	Aviation Combat Element	Logistics Combat Element
-----------------------------	-------------------------------	--------------------------------

Expeditionary Force

Decisively Defeat

Expeditionary Brigade

Swiftly Defeat

Expeditionary Unit

Forward Presence

Crisis Response

Special Purpose

MAGTF

(SP-MAGTF)

Non-standard

Missions



Partner and Prevent

Crisis Response

Contingencies

Major Combat

Scalable and tailorable combined arms teams

UNCLASSIFIED

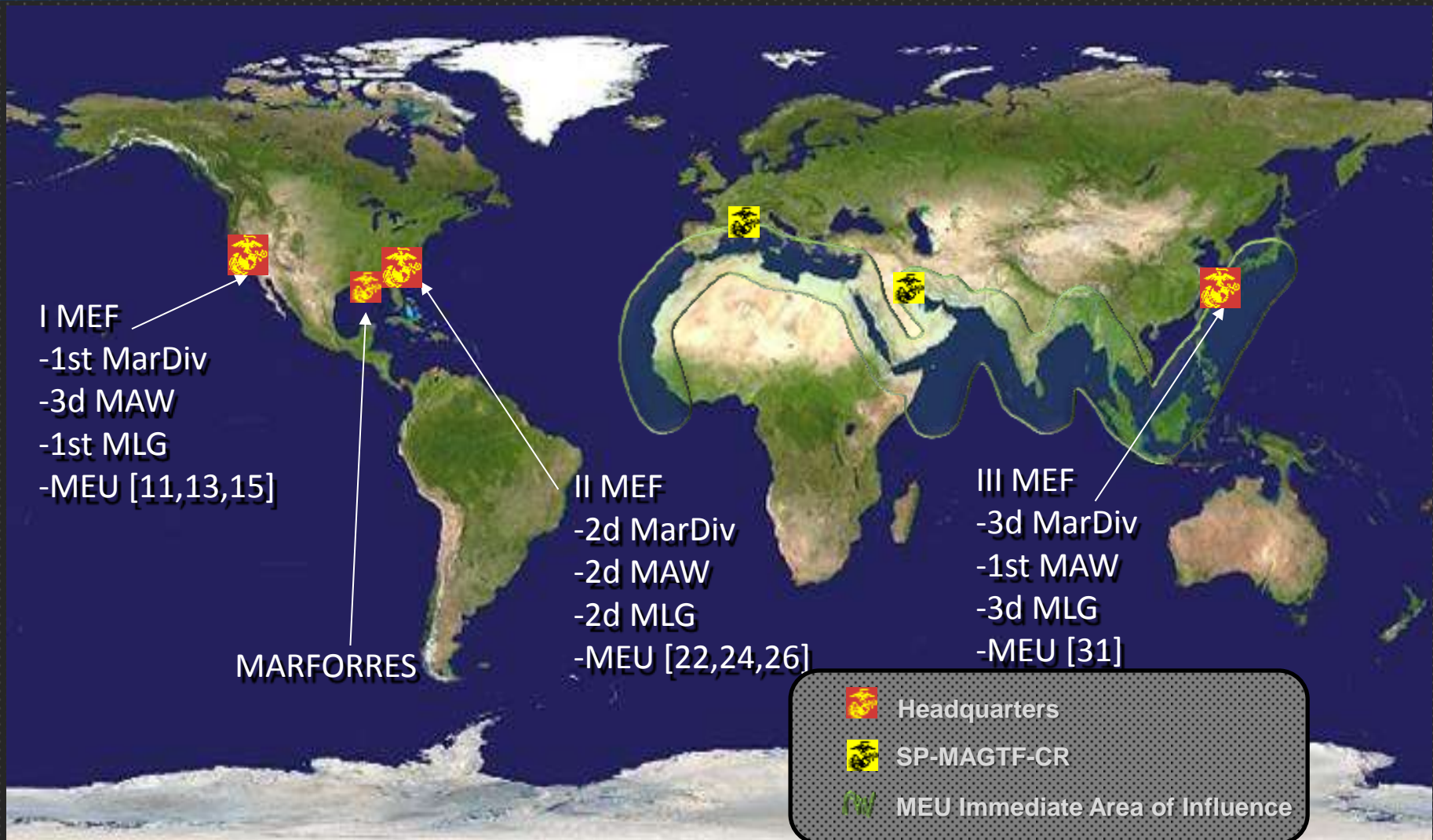


MAGTF Construct

Command Element	Marine Expeditionary Force (MEF) (20k-90k)	Marine Expeditionary Brigade (MEB) (15,000)	Marine Expeditionary Unit (MEU) (2,200)
Ground Combat Element	Marine Division (MARDIV)	Marine Infantry Regiment	Marine Infantry Battalion
Aviation Combat Element	Marine Air Wing (MAW)	Composite Marine Air Group (MAG)	Composite Marine Air Squadron
Logistics Combat Element	Marine Logistics Group (MLG)	Combat Logistics Regiment (CLR)	Combat Logistics Battalion (CLB)



MARINE EXPEDITIONARY FORCE GLOBALLY ENGAGED...





QUESTIONS?





Back-Ups



MARINE EXPEDITIONARY UNIT

- Normally forward-deployed in/near
 - Northeast Asia
 - Southwest Asia
 - Indian Ocean
 - Mediterranean Sea
- On-scene, on-call, immediately employable
- Capable of conducting conventional & select maritime special purpose missions:
 - Over the horizon
 - By surface and air
 - From the sea
 - Under adverse weather conditions
- Combatant Commanders' combined arms force of first resort





SPECIAL PURPOSE MAGTF

- Formed to accomplish a specific mission, operation or exercise.
- Typically formed to support combatant commander engagements, security cooperation and civil-military operations.
- Recent SPMAGTFs include:
 - SP-MAGTF Katrina (2005)
 - SP-MAGTF Unified Assistance (2005)
 - SP-MAGTF Haiti (2010)
 - SP-MAGTF Tomodachi (2011)
 - SP-MAGTF Africa (2011-)
 - SP-MAGTF Crisis Response (2013-)





ENTRY LEVEL TRAINING

Marine Enlisted

- Recruit Training (13 weeks)
 - Transformation
 - Character and Warrior Ethos
 - Individual Combat Basic Tasks
 - Combat Conditioning
 - Single Gender Training



- Marine Combat Training (4 weeks)
 - Sustain the Transformation
 - Basic infantry training - "Every Marine a rifleman"



- MOS Qualification Training

Marine Officer

- OCS (6-10 Weeks)
 - *Leadership Evaluation/Screening*
 - Transformation
 - Character and Warrior Ethos
 - Individual Combat Basic Tasks
 - Combat Conditioning
 - Single Gender Training



- The Basic School (6 months)
 - Leadership, professional knowledge, esprit-de-corps
 - Infantry training focus – "Every Officer a Rifle Platoon Commander"



- MOS Qualification Training

Longest ELT of all Services